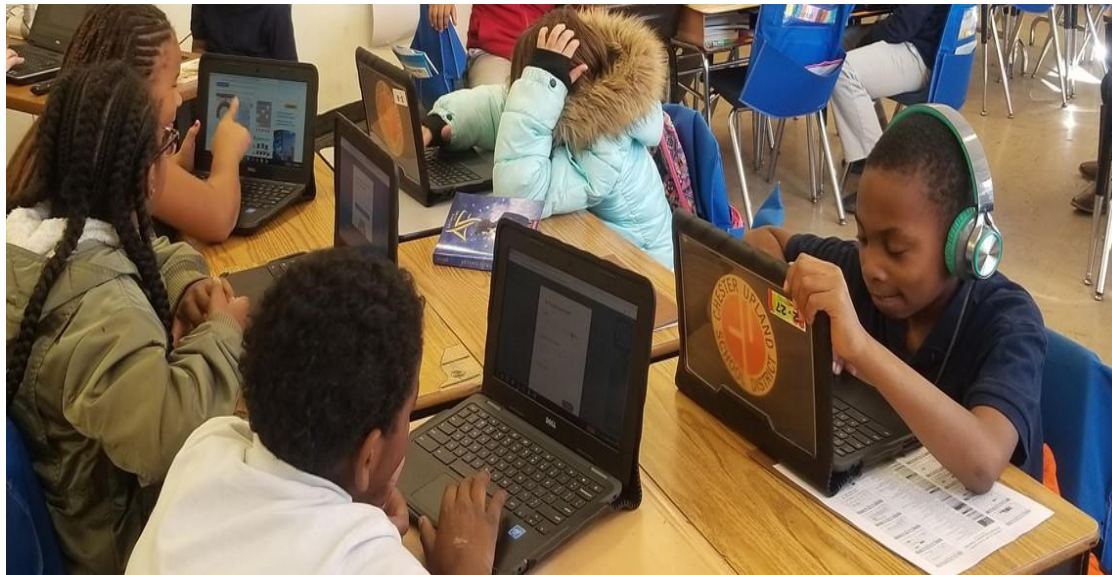




**Ready to Learn, Innovate
&
Achieve**

Receiver's Meeting

September 17, 2020



Dr. Carol D. Birks
Superintendent of Schools

Dr. Jala Olds-Pearson
Assistant Superintendent of
Curriculum, Instruction, and
Professional Development



Provide an overview of Staff and Student Attendance Data



Provide an overview of Student Learning Resources and Family Supports



Provide Internet Access and Technology Distribution Update

Mission Statement



The Chester Upland School District is committed to providing all students the opportunity to achieve excellence in the four A's: Academics, Athletics, the Arts, and Activities.

Vision Statement

The vision of the Chester Upland School District is for every student to graduate from high school ready for college and/or a career in spite of any and all challenges. Shared values every student and adult feels cared for, valued, and supported every minute of every day... Every student completes middle school ready for high school...

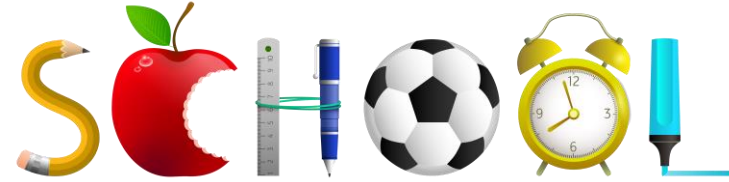


C *Children First:* The well being and continuous learning of every child will drive decisions.

O *One Chester Upland:* With dedicated community of partners, parents, students and staff, we will excel, united as One Chester Upland.

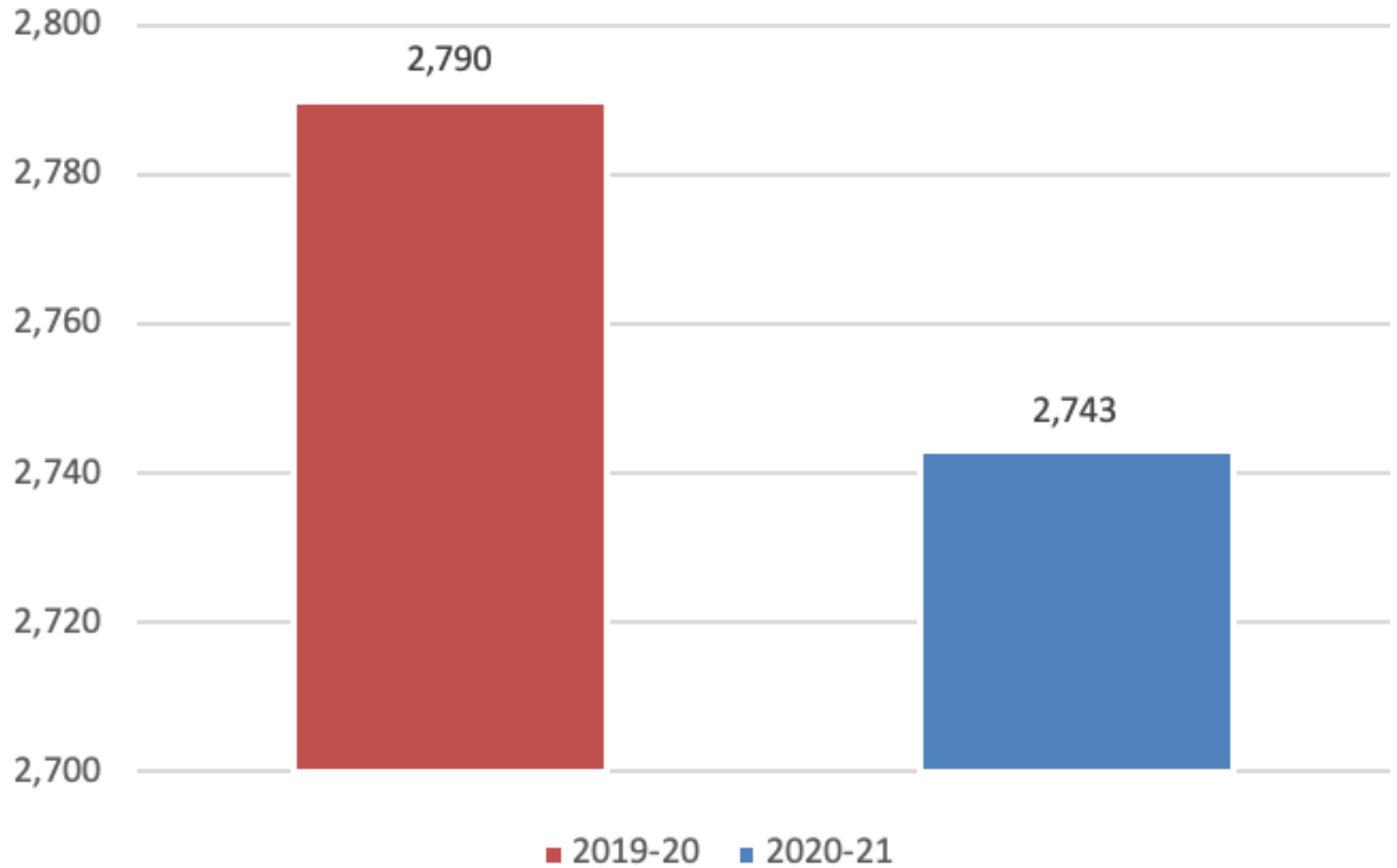
R *Reimagining:* Through a mode of continuous improvement, we will apply four important levers for change, *collaboration, capacity building, deepening knowledge of pedagogy, and focusing direction* to improve outcomes for all.

E *Equity, Excellence, and Emotional Intelligence:* We will ensure equitable access to a quality education that includes emotional intelligence and leads to excellence across all opportunities and services.

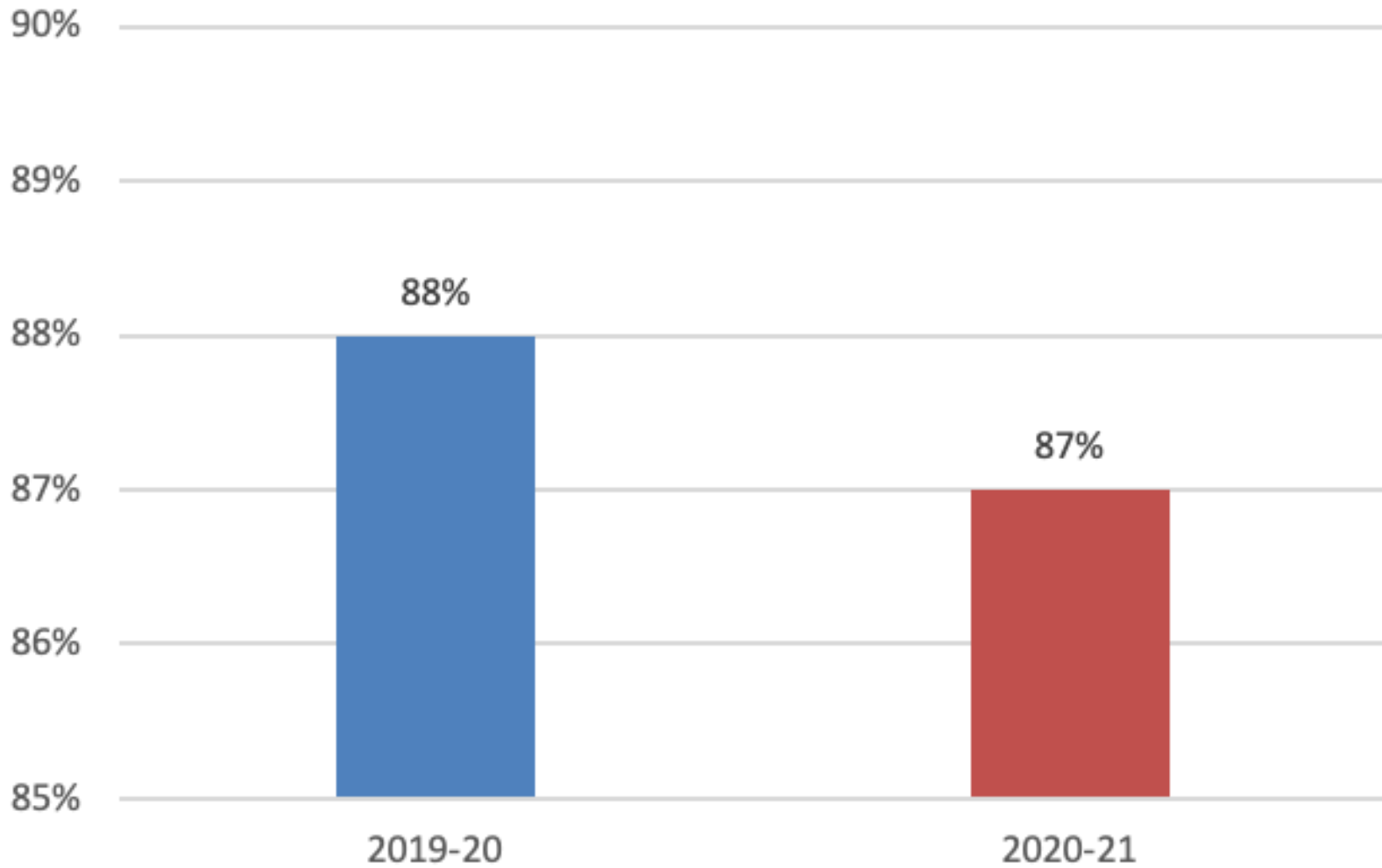


- The Chester Upland School District highly recommends that all students login and zoom in for education every day. Students are permitted to logoff of the computer throughout the school day as needed.
- As per the PA Department of Education, students are required to attend classes and/or submit assignments to be marked present for school.
- Parents can access teacher videos and student assignments on teacher webpages. Teachers can post videos on their Google Classroom.
- Distribution of student materials begins on September 16, 2020. Check school websites for specific days and times.

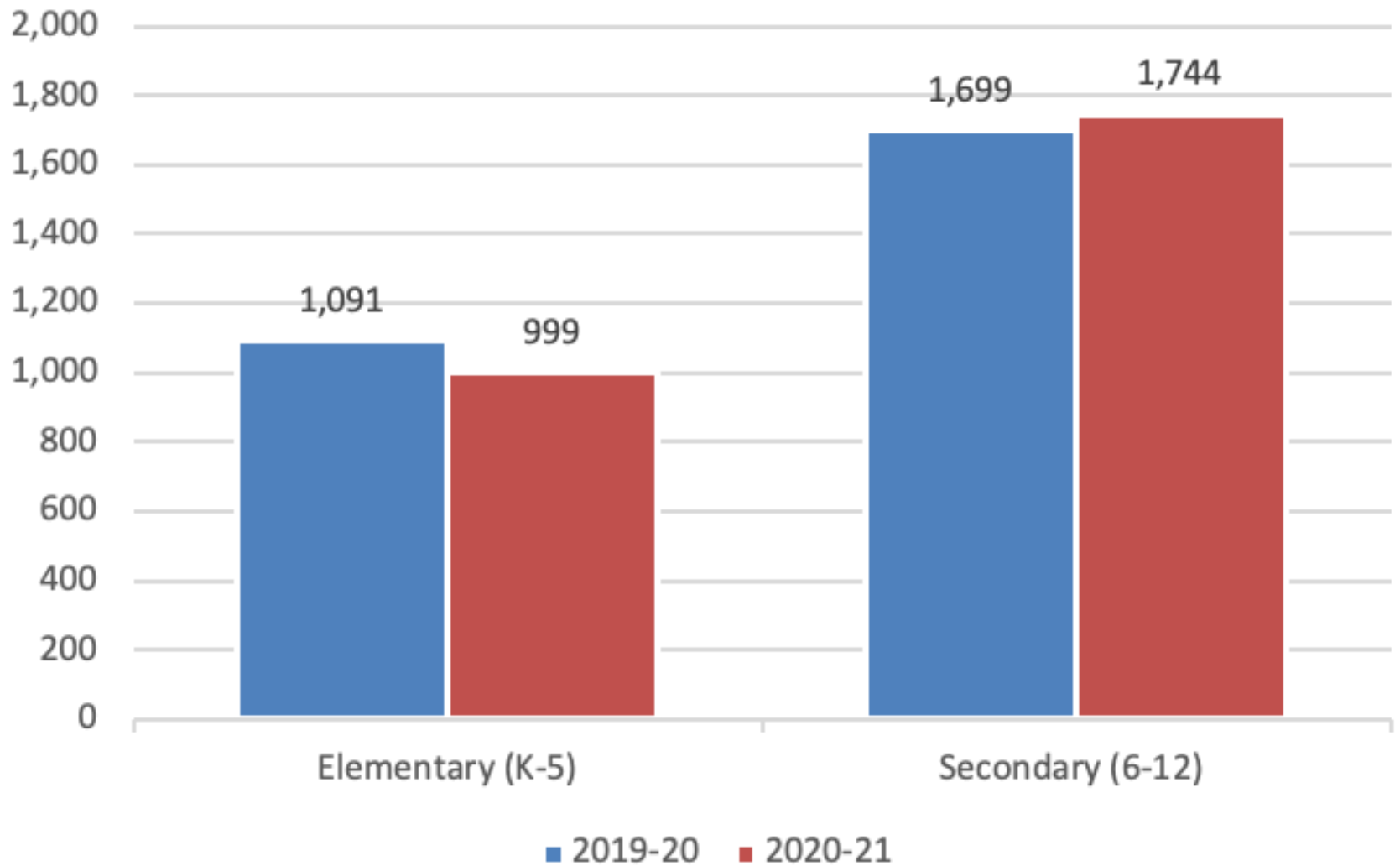
Student Enrollment: District-wide



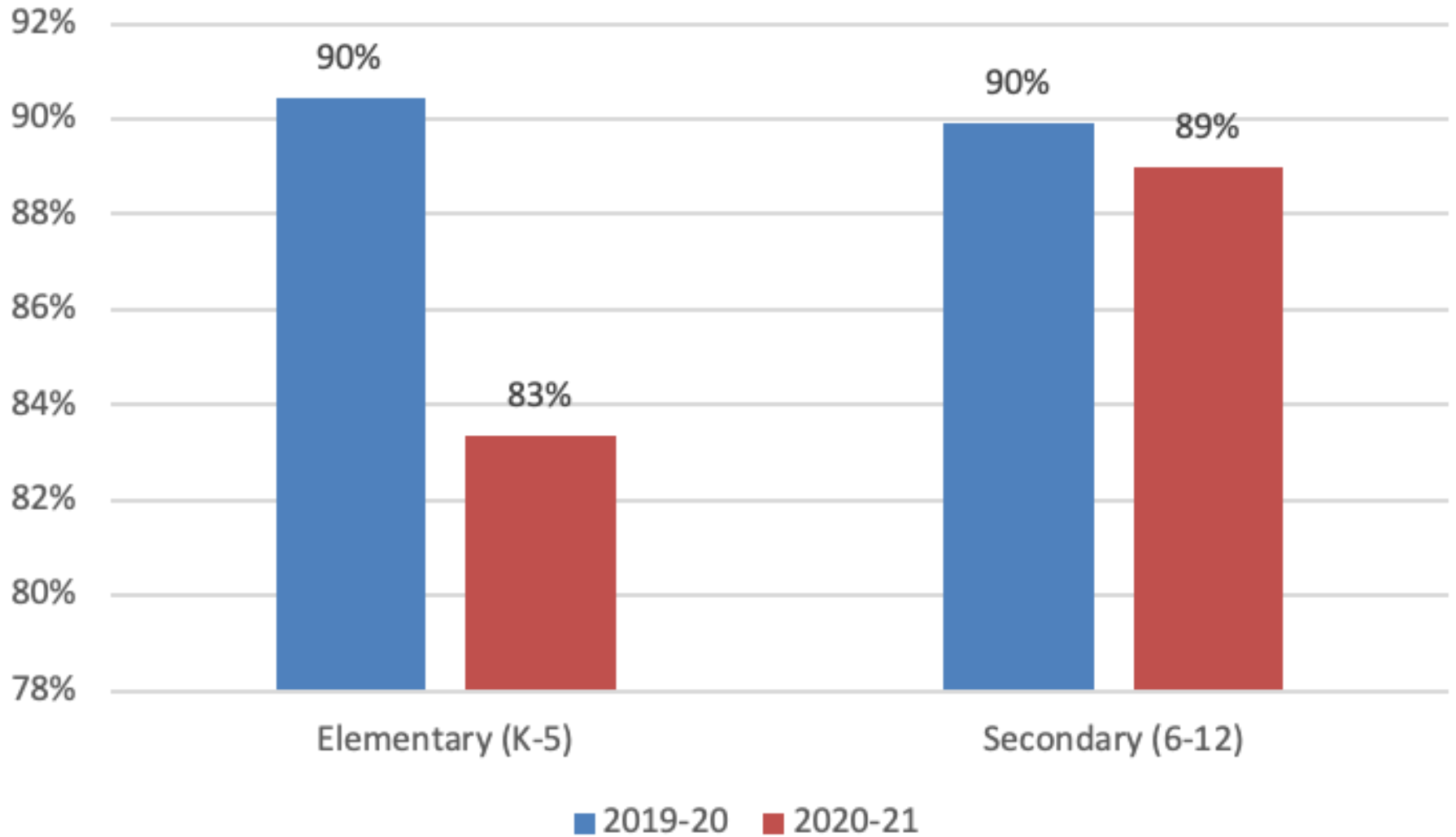
Student Attendance: District-wide



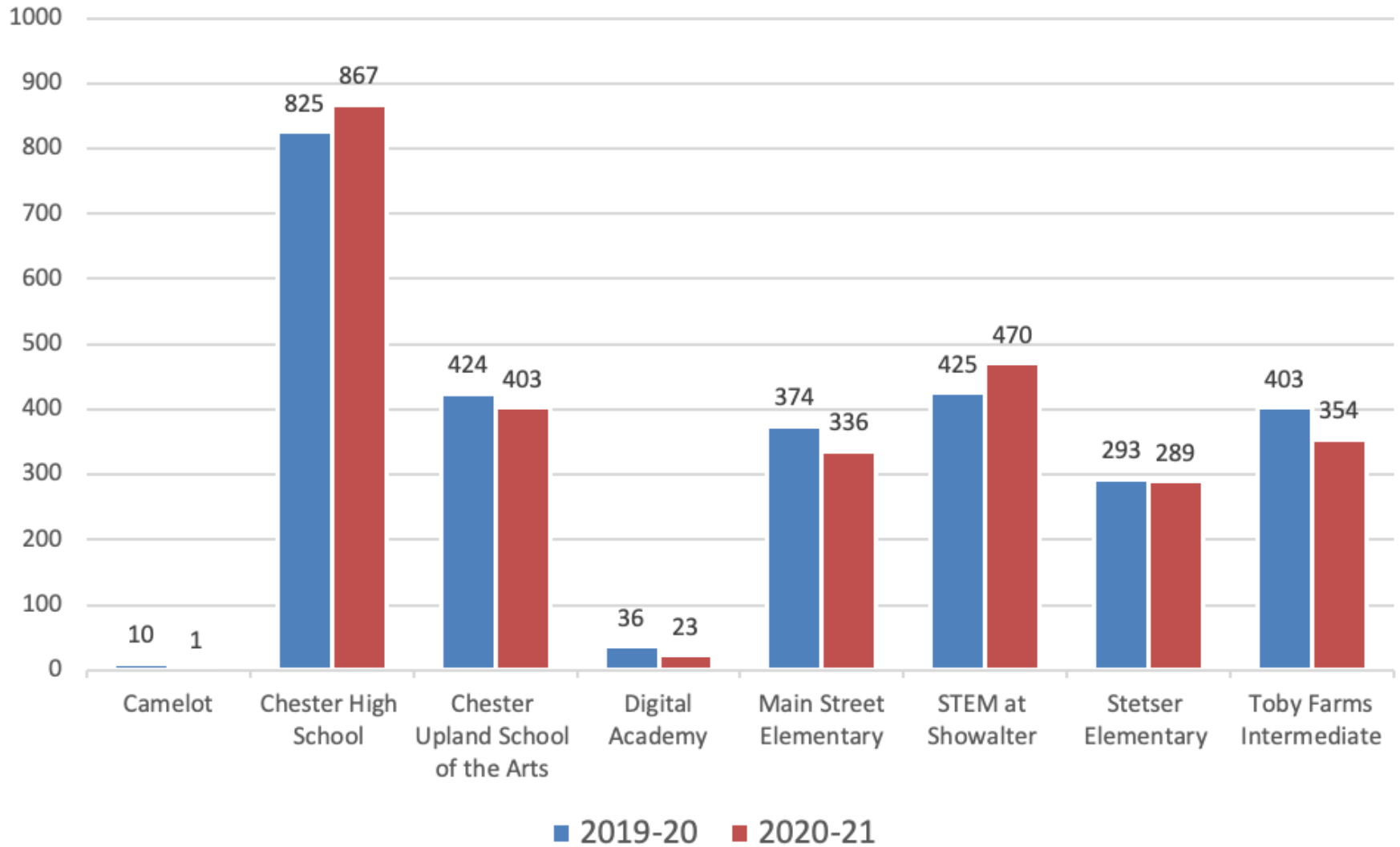
Student Enrollment: Grade Levels



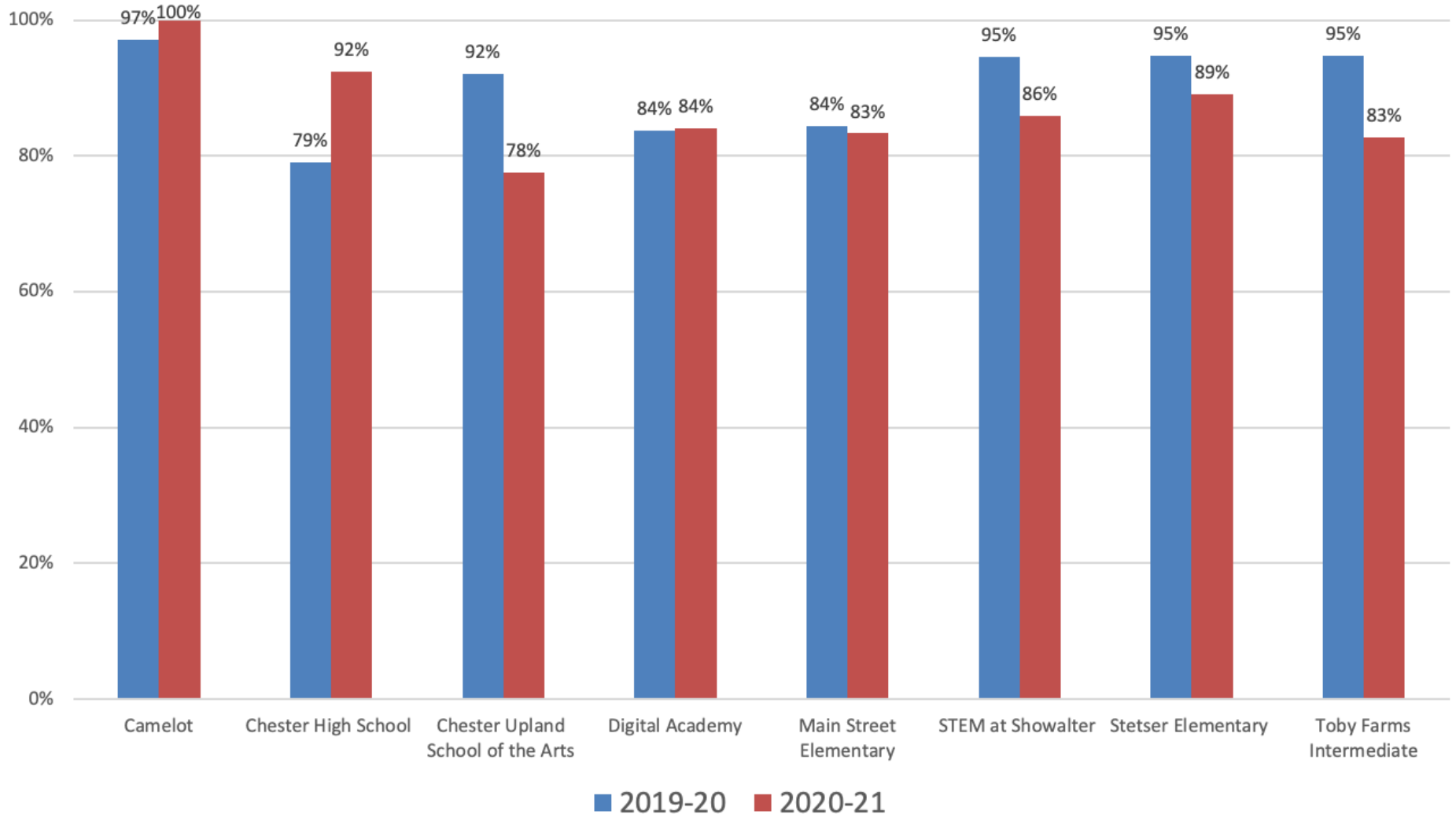
Student Attendance: Grade Levels



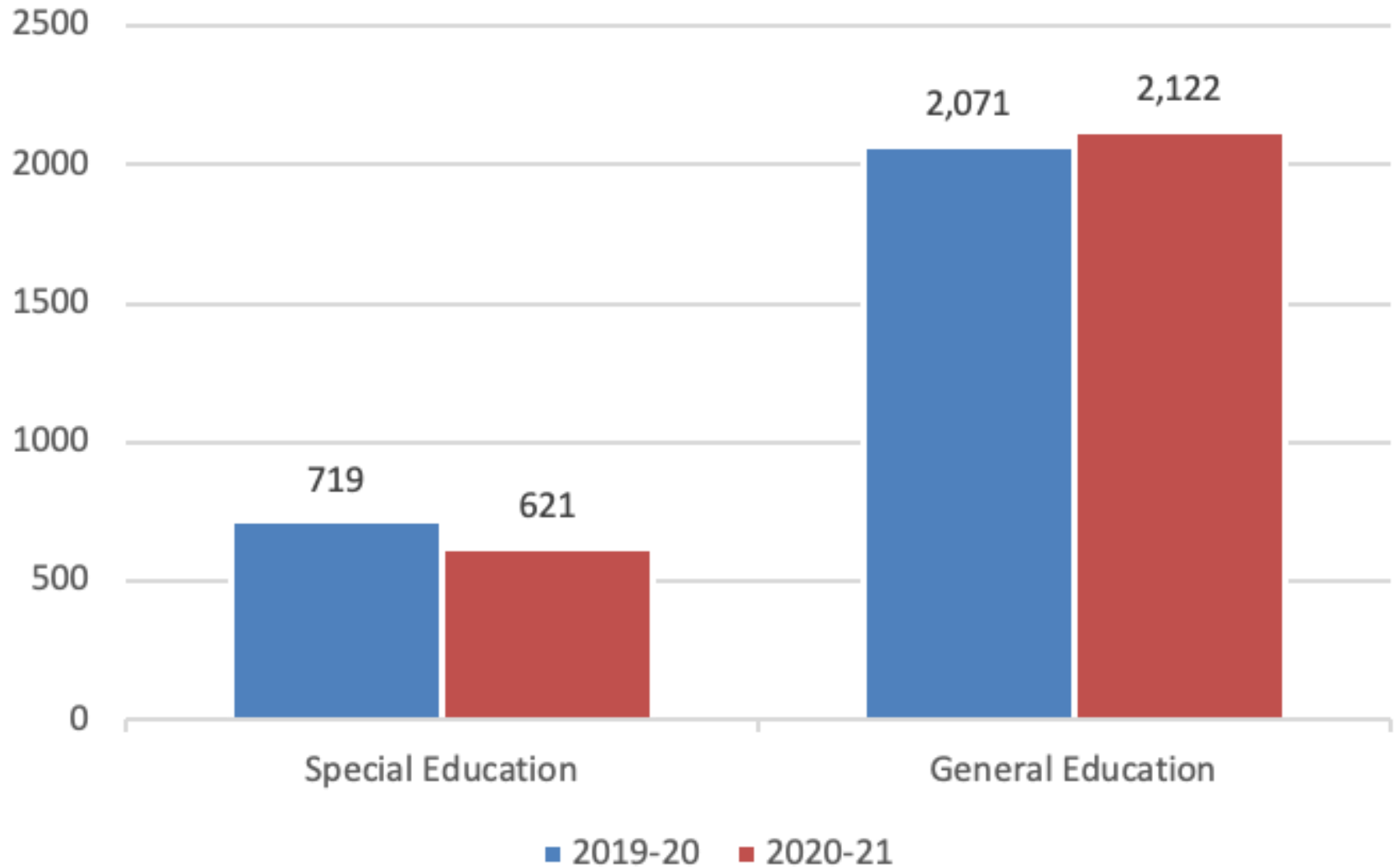
Student Enrollment per Building



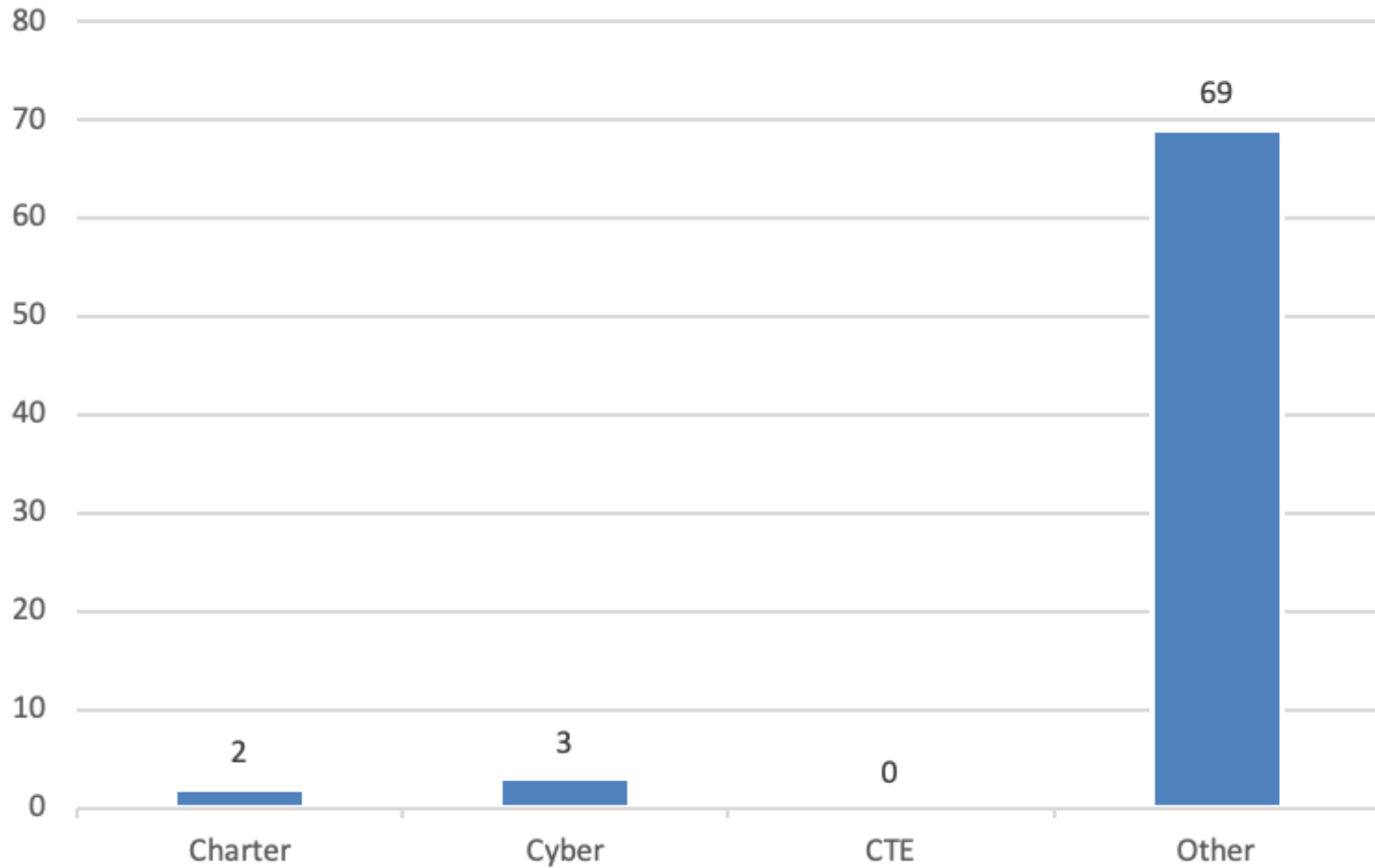
Average Attendance per Building



Student Enrollment: Special Education



Student Withdrawals for 2020-2021 School Year

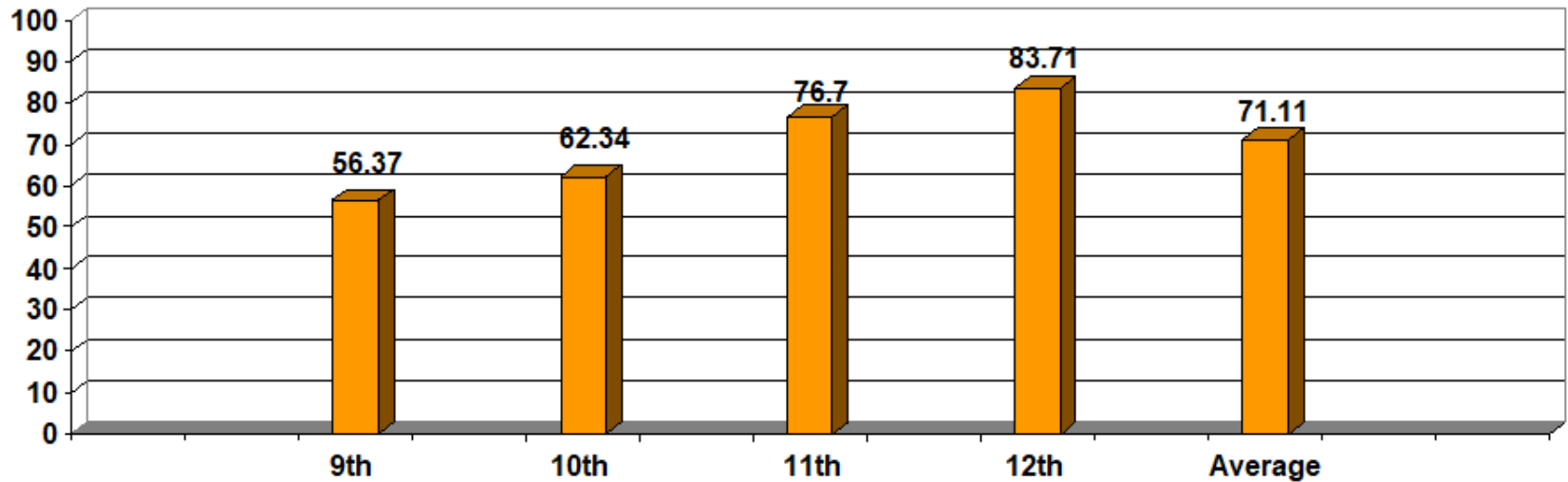


*Total withdrawals on record from all CUSD buildings to date = 74

*Other indicates student moved to another state, PA school district or non-public school.



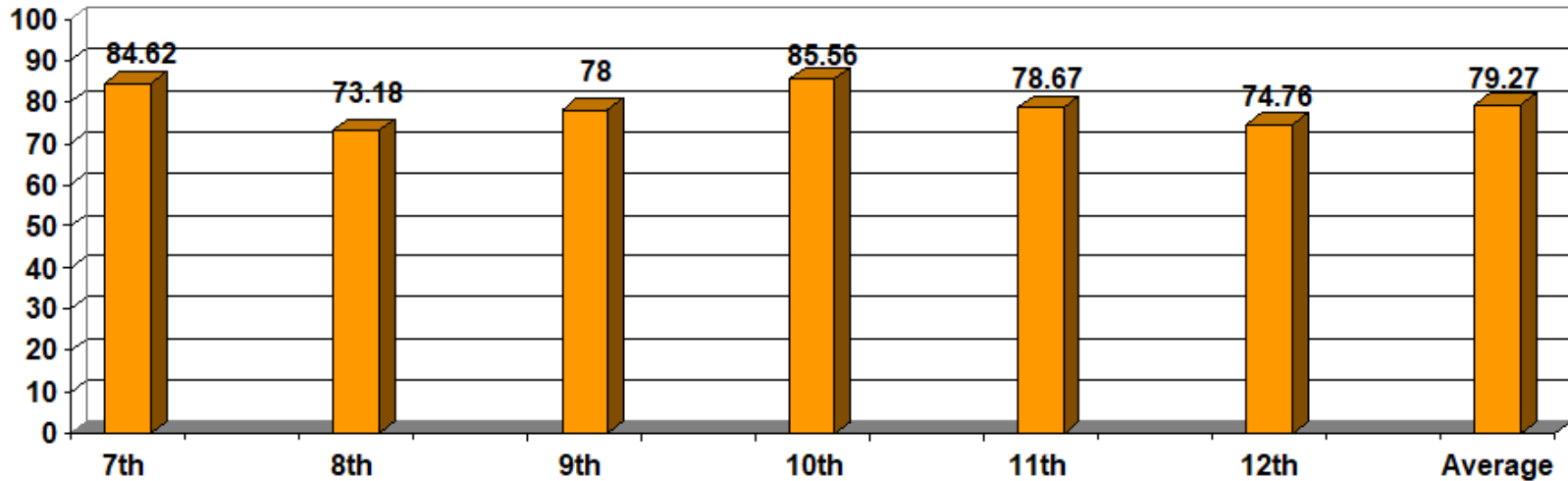
Chester High School Attendance Data September 1, 2020 - September 15, 2020



Attendance Average **71.11%** from 9/1/20 – 9/15/20



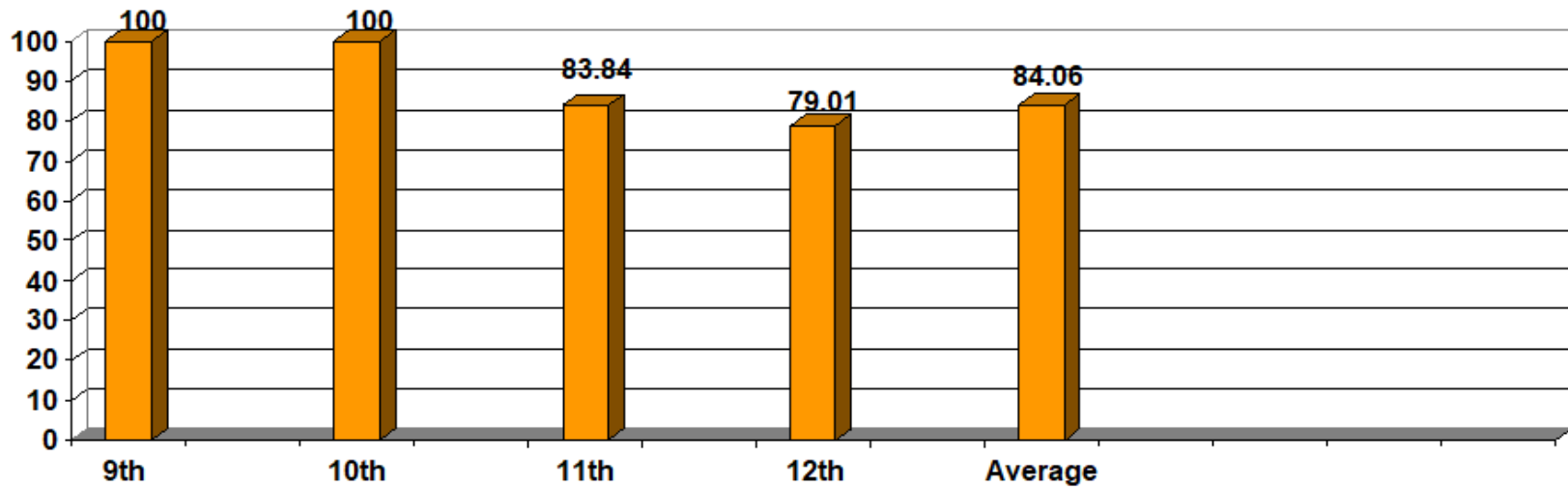
STEM High School at Showalter Attendance Data September 1, 2020 - September 15, 2020



Attendance Average 79.27% from 9/1/20 – 9/15/20



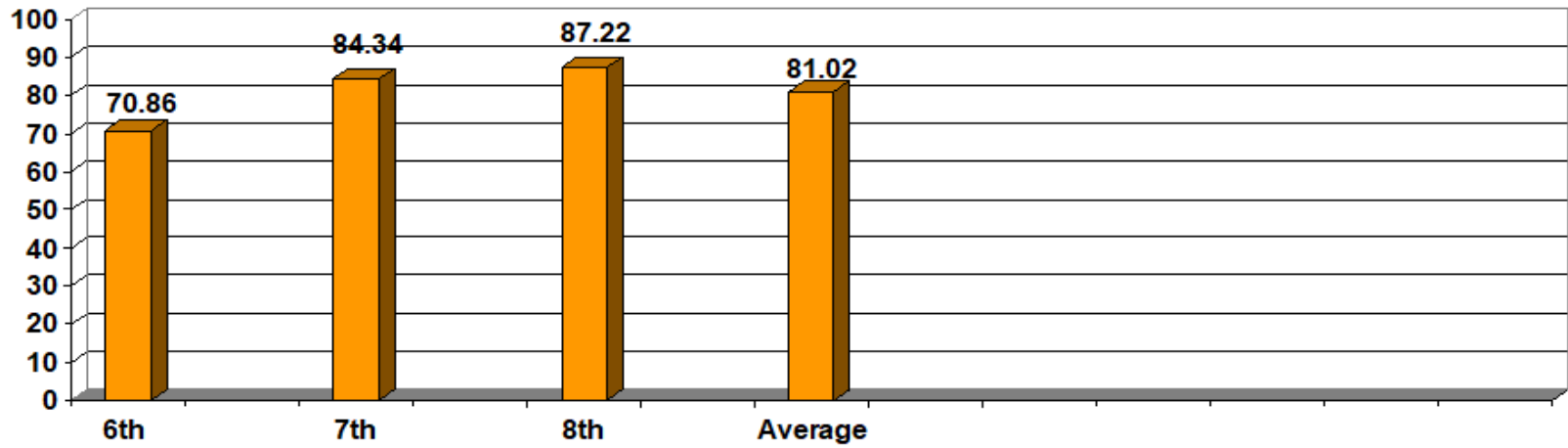
Digital Academy Attendance Data September 1, 2020 - September 15, 2020



Attendance Average **84.06%** from 9/1/20 – 9/15/20



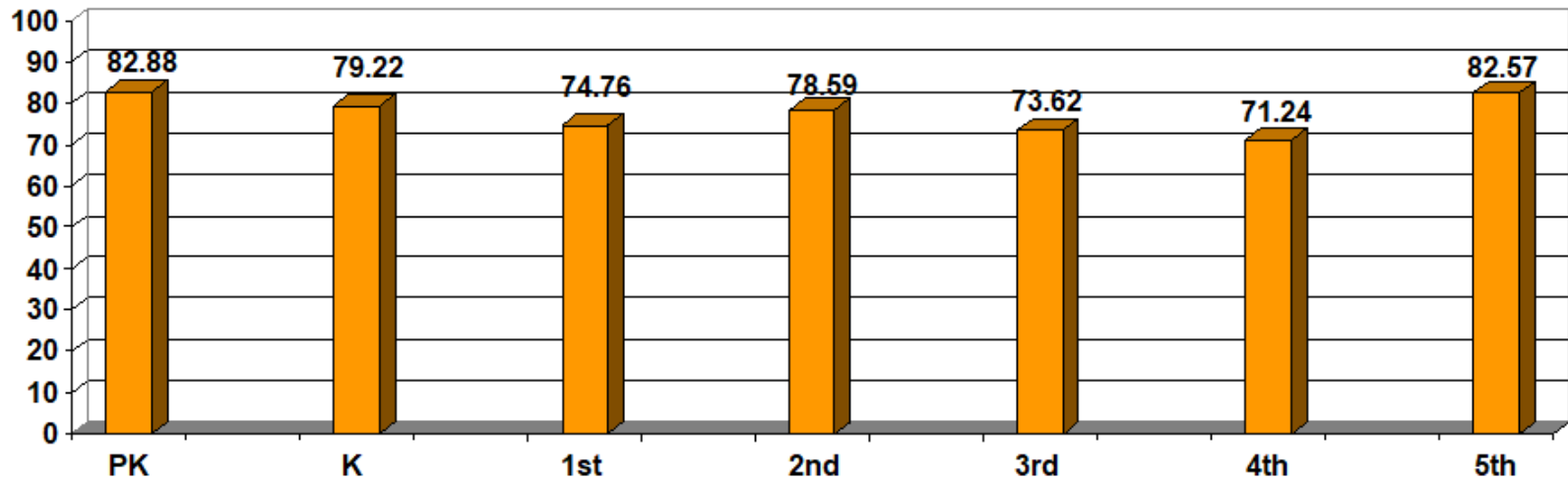
Toby Farms Attendance Data September 1, 2020 - September 15, 2020



Attendance Average **81.02%** from 9/1/20 – 9/15/20



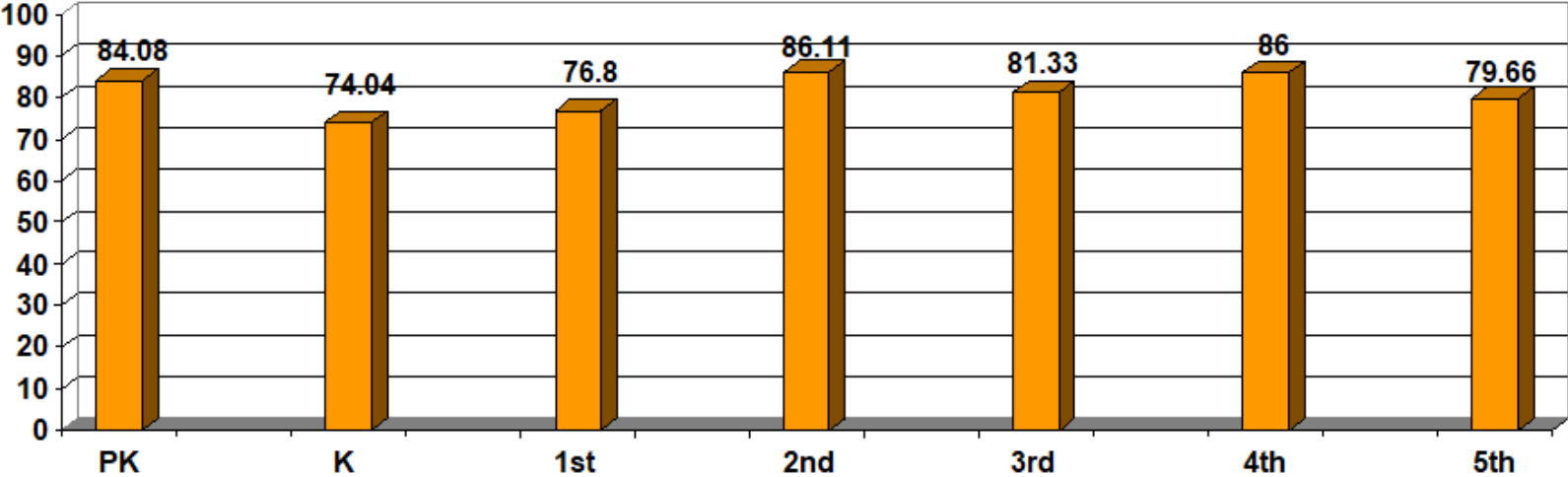
CUSA Attendance Data September 1, 2020 - September 15, 2020



Attendance Average 77.33% from 9/1/20 – 9/15/20



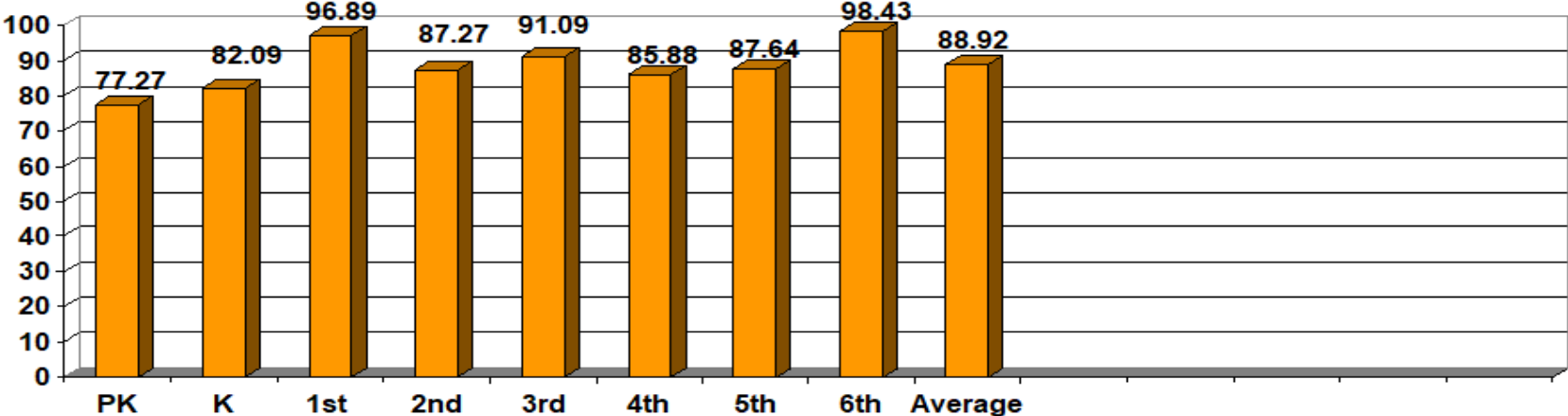
Main Street Attendance Data September 1, 2020 - September 15, 2020



Attendance Average **81.29%** from 9/1/20 – 9/15/20



**Stetser
Attendance Data
September 1, 2020 - September 15, 2020**

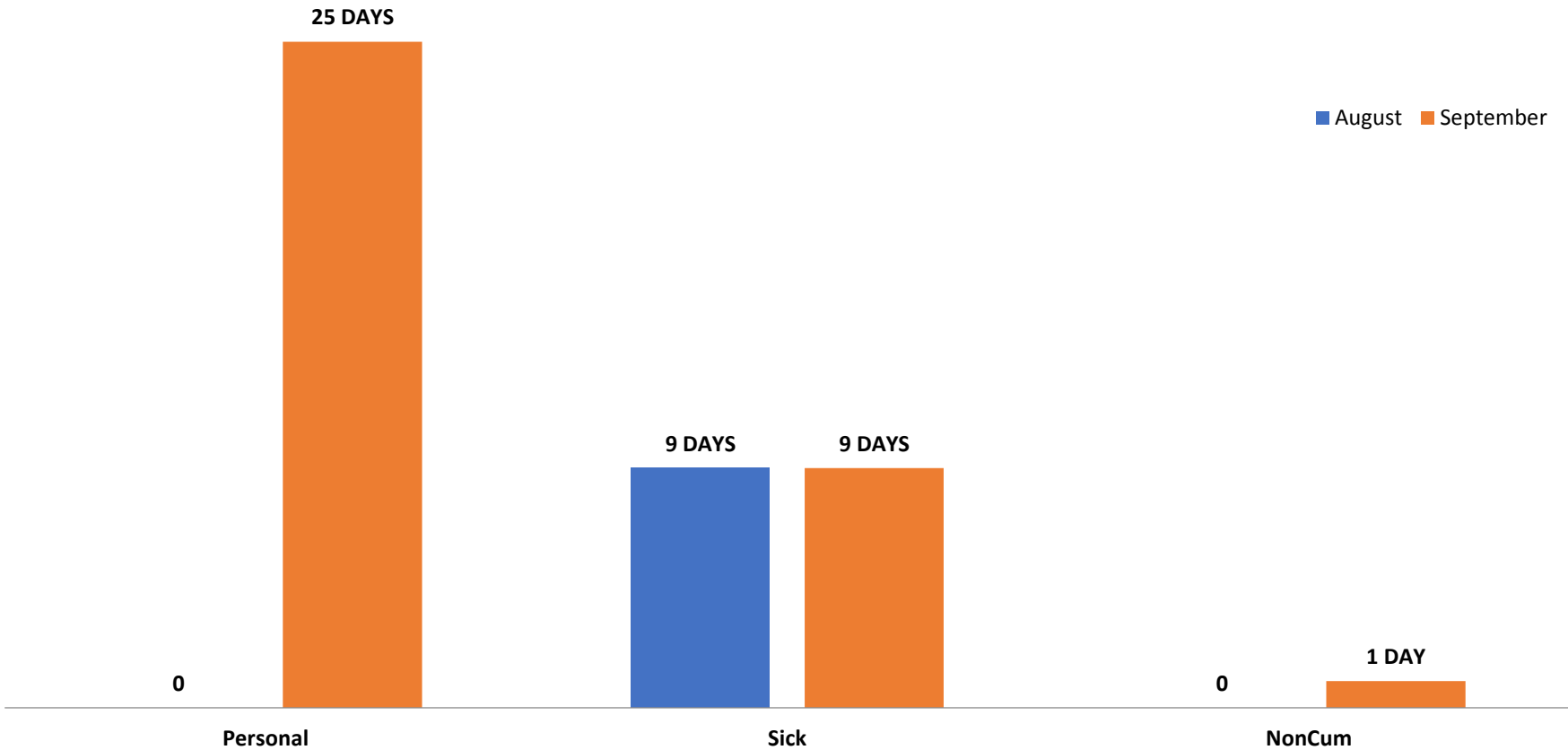


Attendance Average **81.29%** from 9/1/20 – 9/15/20

Total Teacher Absences



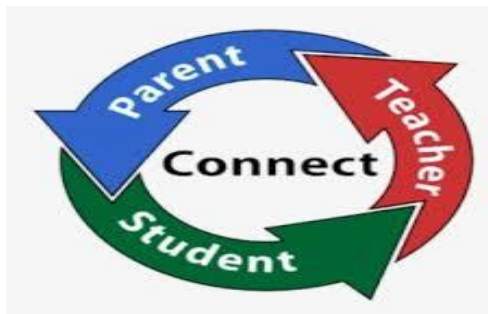
This graph and the following graphs represent attendance from August 25, 2020 through September 12, 2020.





- 1-1 Model – Computer devices issued by the district are available for every CUSD student.
- Since the beginning of the school year, 87.02% of CUSD students received a computer device.
- Thus far, the district has distributed approximately 1,970 Chromebook devices and 425 iPads to families for the 2020-2021 school year.
- The district is still distributing hotspots to families.

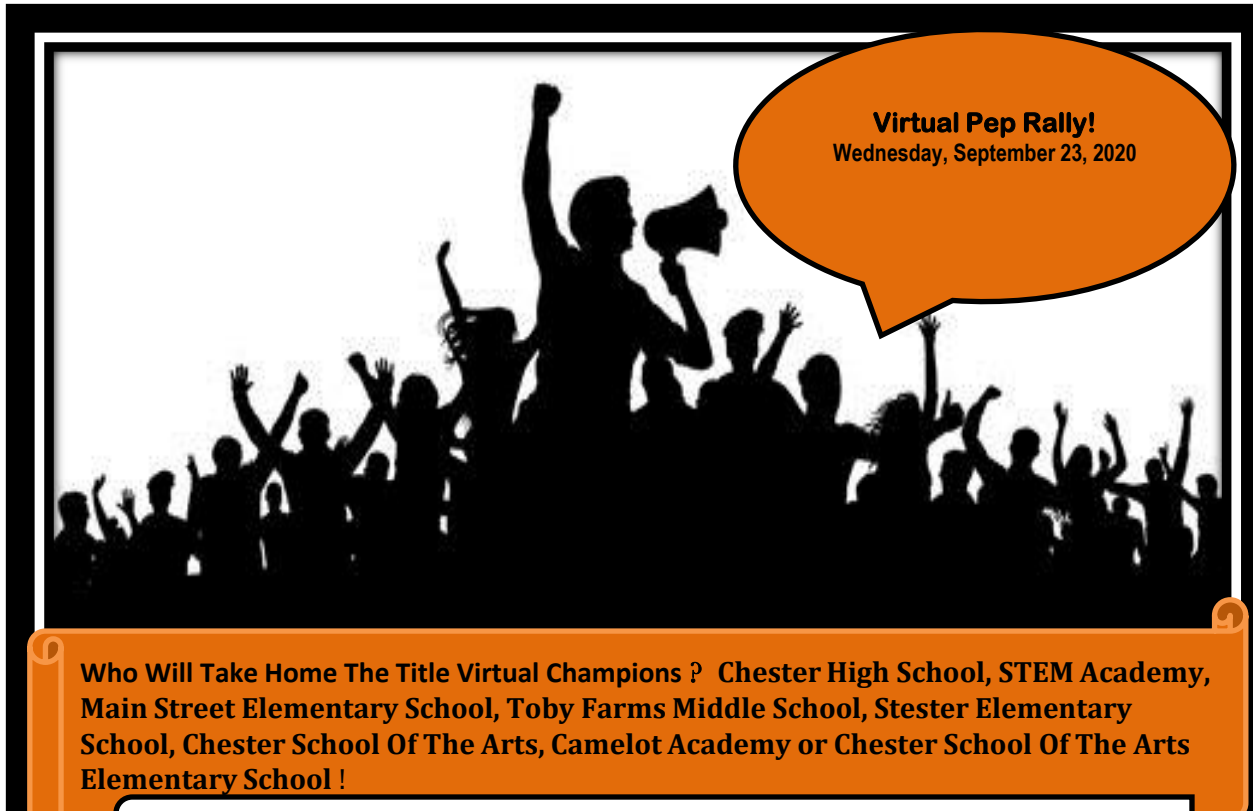
- Two district-wide technology family trainings were held this school year, 33 parents attended.
- District-wide technology training sessions for families will be held on September 24, 2020 at CUSA and September 29, 2020 at Main Street.
- Continuous outreach to families and community members is occurring via social media.



- Chester Upland/Philabundance Fresh for All Food Program distributes food every Tuesday from 12:00 p.m. to 1:00 p.m. at Chester High School (Ninth Street, Lower Level) for the community.
- Meal distribution is every Wednesday from 10:00 a.m. to 12:00 p.m. at all Chester Upland schools and from 4:30 p.m. to 6:30 p.m. at Chester High School (off Penn Street).



Chester Upland School District Presents: Zoom In, All In, For Education:



Virtual Pep Rally!
Wednesday, September 23, 2020

Who Will Take Home The Title Virtual Champions ? Chester High School, STEM Academy, Main Street Elementary School, Toby Farms Middle School, Stester Elementary School, Chester School Of The Arts, Camelot Academy or Chester School Of The Arts Elementary School !

District Wide Contest !

District Wide Giveaways !

My Principal Has Talent Show!

Music By : Chester's Own DJ Deuxrelle

